



Justrite Safety Group

479 Cushion Trax®

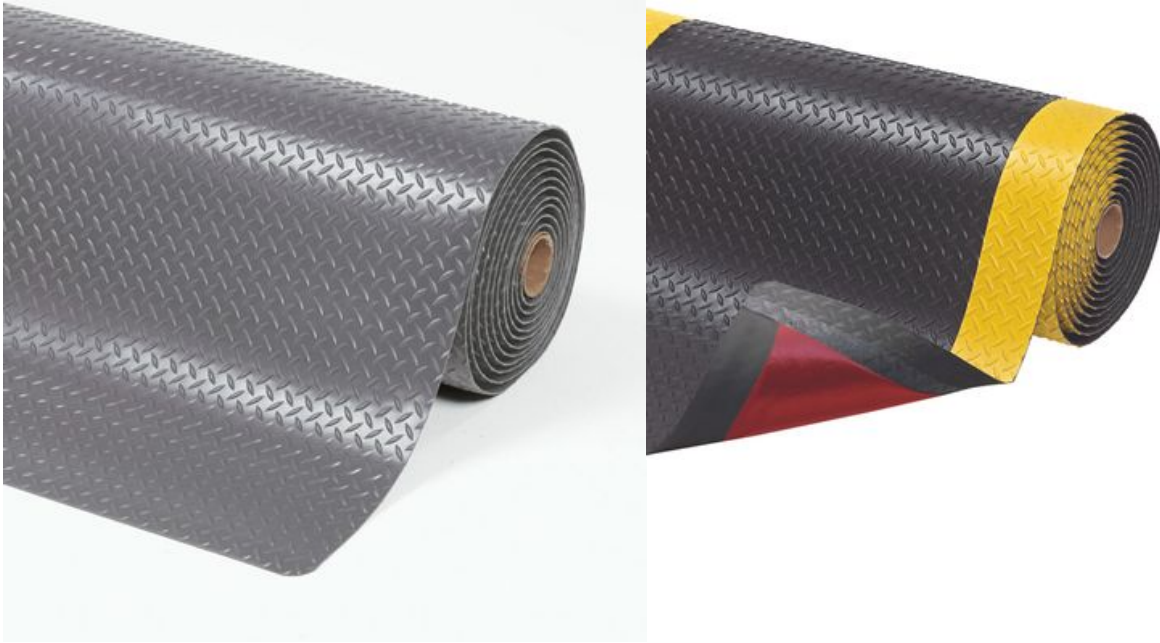
Bestselling anti-fatigue mat



479 Cushion Trax®

Ergonomic, Anti-fatigue & Safety Matting - Dry Areas Linear Lengths

Bestselling anti-fatigue mat with ergonomic benefit derived from 14 mm thick worker platform comprised of a long wearing top surface laminated onto a resilient microcellular vinyl base for maximum durability, comfort, and insulation from hard floors and vibrations.



- Featured with RedStop™ slip resistant backing to prevent mats from shifting
- Available with yellow borders along sides to comply with OSHA code 1910-144
- Bevelled edges on all four sides to minimize risk of tripping
- Diamond plate pattern provides traction while allowing easy twist turns
- UniFusion™ technology, engineered to resist in the harshest work environments
- Reach compliant (Registration, Evaluation, Authorization and Restriction of Chemicals).

- Dry Areas
- In manufacturing plants, assembly lines, picking, packing and logistics warehouses, individual workstations. Also suitable for commercial environments including hotels, reception desks, shop counters, department stores, banks, restaurants, etc.
- Heavy duty

Recommended use



Ergonomic, Anti-fatigue & Safety Matting - Dry Areas Linear Lengths Cushion Trax®

General

Brand	Notrax
Category	Dry Areas Linear Lengths
Product Number	479
Product Family	Industrial & Commercial Matting
Product Group	Ergonomic, Anti-fatigue & Safety Matting
Product Name	Cushion Trax®
Recommended use	In manufacturing plants, assembly lines, picking, packing and logistics warehouses, individual workstations. Also suitable for commercial environments including hotels, reception desks, shop counters, department stores, banks, restaurants, etc.
Shipping Location	Achterzeedijk 57, Unit 15, Barendrecht 2992SB, The Netherlands, Moselle, MS 39459, United States
Type	Dry Areas - Heavy Duty Industrial
Update trigger	20230908-1
Usage Intensity	Heavy duty

Sustainability

REACH	Reach compliant (Registration, Evaluation, Authorization and Restriction of Chemicals).
Recycled	True
Recycled Material	60-70% recycled PVC top surface
Rohs US	Rohs compliant (Restriction of Hazardous Substances).
Warranty (years)	3

Tests

Abrasion Resistance 1000	0.41% weight loss
Abrasion Resistance 500	0.34% weight loss
Compression Deflection 1.4	0.43 cm
Compression Deflection 2.8	0.60 cm
Elongation	62,60%
Fire rating EU	EN 13501-1 Bfl-S1
Fire rating US	Pass
Foam Battery	40 lb/in ²
Hardness	85 Shore A
Slip Rating	R10
Coefficient Friction Dry	0,81
Surface Flammability	Pass
Tear Strength	34 lb

Technical Specifications

Application	Industrial Environments
Backing	Microcellular vinyl
Breaking Load	55 lb
Edges	Bevelled edges on all sides
Material	PVC
Material Group	PVC
Process	Lamination

Cushion Trax® Black

Art. nr.	Dimension (cm)	Weight (kg)	Thickness (mm)
479R0433BL	122cm x 10m	71.6	14
479S306MBL	91cm x 600cm	31.8	14
479C0060BL	152cm x linm	13.5	14
479R2475BL	60cm x 22.8m	77	14
479S303MBL	91cm x 300cm	14.8	14
479S0035BL	91cm x 150cm	8	14
479R6075BL	152cm x 22.8m	209.8	14
479S0023BL	60cm x 91cm	3.2	14
479C0036BL	91cm x linm	4.9	14
479R3675BL	91cm x 22.8m	110	14
479R4875BL	122cm x 22.8m	156	14
479C0048BL	122cm x linm	7	14
479C0024BL	60cm x linm	3.4	14

Cushion Trax® Grey

Art. nr.	Dimension (cm)	Weight (kg)	Thickness (mm)
479S303MGY	91cm x 300cm	14.8	14
479R2475GY	60cm x 22.8m	80	14
479C0048GY	122cm x linm	7	14
479S0035GY	91cm x 150cm	8	14
479S306MGY	91cm x 600cm	31.8	14
479S0023GY	60cm x 91cm	3.2	14
479R4875GY	122cm x 22.8m	165	14
479R3675GY	91cm x 22.8m	120	14
479C0036GY	91cm x linm	4.9	14
479C0024GY	60cm x linm	3.4	14

Cushion Trax® Black/Yellow

Art. nr.	Dimension (cm)	Weight (kg)	Thickness (mm)
479C0048YB	122cm x linm	7	14
479S303MYB	91cm x 300cm	14.8	14
479C0060YB	152cm x linm	13.5	14
479S0035YB	91cm x 150cm	8	14
479S0023YB	60cm x 91cm	3.2	14
479R6075YB	152cm x 22.8m	209.8	14
479R3675YB	91cm x 22.8m	110	14
479R2475YB	60cm x 22.8m	77	14
479S306MYB	91cm x 600cm	31.8	14
479R4875YB	122cm x 22.8m	158	14
479C0036YB	91cm x linm	4.9	14
479C0024YB	60cm x linm	3.4	14